

PoudrePark

Wildland Urban Interface

- Less than 1 house/40 ac
- 1 house/40 ac to 1 house/20 ac
- 1 house/20 ac to 1 house/10 ac
- 1 house/10 ac to 1 house/5 ac
- 1 house/5 ac to 1 house/2 ac
- 1 house/2 ac to 3 houses/ac
- More than 3 houses/ac

Figure 2. a. 2
Wildland-Urban Interface and Intermix in Poudre Park displayed by housing density per acre. (Source: Colorado State Forest Service: Colorado Forest Atlas)

Poudre Park

The community borders are defined as:

- East Border is MM 117
- West Border is MM 100
- South Border - 1 mile from Hwy 14 on CR 23

Legal:

Township 9 North, Range 72 West of the 6th PM Sections 34, 35

Township 8 North, Range 72 West of the 6th PM Sections 1, 2, 11, 12

Township 8 North, Range 71 West of the 6th PM Sections 1, 2, 3, 4, 5, 6, 7, 8, 9, 10, 11, 12

Township 9 North, Range 71 West of the 6th PM Sections 35, 36

Township 9 North, Range 70 West of the 6th PM Sections 31, 32, and the west half of section 33

Township 8 North, Range 70 West of the 6th PM Sections 5, 6, 7, 8

FYI
Mile Marker (MM) numbers decrease from east to west.

The Poudre Park community is defined by the natural breaks between inhabited areas and extends from Gateway Natural Area in the east to Century Park day use area in the west. This section of Highway 14 is a major destination for campers, hikers, rafters, fishermen, and sightseers. Even though there are many miles that have few structures, such as from the Stove Prairie Road to Century Park, this is a high use area. Popular hiking trails include Grey Rock, Hewlett Gulch, and Young Gulch. The Cache La Poudre River is a favored destination spot for whitewater rafting, kayaking, picnicking, and fishing. Many residences and businesses are accessed directly off Highway 14, also known as Poudre Canyon Road. However, there are some side roads off the highway.

From the east, the PCFPD and the Poudre Park area starts just east of Gateway Park located at approximately mile marker (MM) 117. Immediately west of North Poudre Diversion Dam MM 115.5 is a steep driveway that serves three homes. There is room to turn a type 6 around up there. Kings Canyon Road near MM 115 is a very narrow and rough road. There are seven residences up this road now, down from the 11 pre-High Park Fire. There are a few places to turn a type 6 engine around on this road. There is no access to water. Smith Bridge at MM 114.9 is wood construction with no official weight rating but has supported type 6 engines. There are 12 residences across the bridge. At MM 114.5 there is a drive with 1 residence at the end. There is no place to turn around, but a type 6 could back up this driveway. The entrance to Unger Mountain Road MM 114.6 could easily be mistaken for a driveway. It is on the south side of road just east of Manners Bridge. There are nine residences up this road, with the last being 1.1 miles uphill. There is limited turn around and no water access. Manners Lane Bridge MM 114.5 is concrete and steel beam construction with no official weight rating. There are seven residences across this bridge. The Workman Bridge is of wood construction and is posted at a seven ton weight limit. This bridge serves one residence and is difficult to pass over. Greyrock Trail at MM 113.4 is a popular hiking trail. There seems to be a fire up there almost every summer. There is a foot bridge crossing the river at the trailhead. The west end of the Meadow Trail has a steep and unmarked, but usable access to the Hewlett Gulch Trail. As you enter Poudre Park (from the east) there are three bridges in a row, Kramer, Wrobbel and Elder. These bridges are from MM 112.4 to 112.2. Kramer Bridge MM 112.4 is of concrete, wood and steel construction and has no official weight

rating. This bridge is not right on Hwy 14. It provides access to three properties on the far side of the river. The Wrobbel Bridge is concrete, wood and steel construction with no official weight rating. Although there is no weight rating, it is not recommended to take fire equipment across this bridge. In an emergency you could access this area via the Kramer Bridge. Elder Bridge, mile marker 112.2, is of concrete, wood and steel construction with no official weight rating. It is not recommended to drive an engine across it and the area is accessible via the Kramer Bridge.

Between approximately mile markers 112.5 to 111 is the community of Poudre Park. This community has approximately 100 residences, the vast majority are lived in year-round. Poudre Park also has Fire Station #1, a community center, a church and a small mobile home park with a campground and a small general store. The majority of the residences and the non-residential properties just mentioned are all along Highway 14 with the notable exceptions:

From East to West:

- Ray Shoaf Ln. (north)- four residences
- Wonderful Pl. (south)- three residences
- Poudre River Rd. (east, horseshoe from 14 back to 14)- 27 residences
- Driveway directly across from east end of Poudre River Rd serves two properties
- Falls Creek Dr. (south)- 17 residences
- Hewlett Gulch Bridge (concrete and steel beam, can support emergency apparatus) - serves Hewlett Rd. and Wild River Rd.- six residences, Hewlett Gulch Trail and Hewlett Gulch Landing Zone

The Poudre Park Picnic Area (approx MM 110.6) is the end of the residential area in the Lower Canyon until you reach the Mishawaka Inn at MM 108.1 (13714 W. Hwy 14). Improved camp and picnic sites, from east to west, that are located between MM 110.6 and MM 108.1 include::

- Poudre Park Picnic Area, MM 110.6
- Diamond Rock Picnic Area, MM 110.2
- Ouzel Picnic Area, MM 109.7
- Ansel Watrous Campground, East (MM109) and West (MM 109.1) (open year round)
- Young Gulch Trailhead, MM 109

The Mishawaka Inn is open year-round. This property has at least two year-round residents on the property. Immediately west of the “Mish” is the last residential property, MM 108 (13965 W. Hwy 14) before the Narrows, the official end of the Lower Canyon.

West of the “Mish” is Stove Prairie Road that runs to the south, with access to Rist Canyon Fire Protection District around MM 105.8. Poudre Canyon District extends one mile south of Highway 14. West of Stove Prairie Road are the following improvements on the north side of Highway 14 along the river:

- Stove Prairie Landing Campground MM 105.4
- Upper Landing Picnic Area MM 105
- Stevens Gulch Day Use Area MM 104.7
- Big Narrows Bridge (spanning the river) MM 104.1

On south side of Highway 14:

- Lower Narrows Campground MM 101.9
- Narrows Campground MM 101.7
- Dutch George Campground MM 100.6
- Century Park Day Use Area MM 100.2

The Narrows is a popular rock climbing area.

most of which is ponderosa pine. Tall prairie grasses grow along most of the roadways. During dry seasons of the year, this material would ignite quickly, carrying wildfire throughout the community.

Businesses in Poudre Park the Lower Canyon

- Columbine General Store and Rusty Buffalo Campground - being remodeled
- Poudre Christian Fellowship Church
- Poudre Canyon Fire Protection District - Fire Station #1
- Lower Poudre Canyon Community Center
- Mishawka Amphitheatre

167 Homes exist in the WUI

- Kings Canyon
- Smith Bridge
- Manners Lane
- Poudre Park
- Hewlett Gulch
- Boyd Gulch
- Unger Mountain
- Falls Gulch
- And many houses along highway 14

PCFPD's Station 1 in Poudre Park



Trailheads in Poudre Park

- Grey Rock Trailhead
- Hewett Gulch Trailhead
- Young Gulch Trailhead

Evacuation Routes

- Highway 14 east to US 287
- Highway 14 west to CR 69 (no trailers over 16 feet) or Cameron Pass
- CR 23 (Stove Prairie Rd.) south to Rist Canyon or US 34

To see the entire [Colorado Wildfire Risk Assessment \(COWRA\) report for Poudre Park](#), click [HERE](#).

At MM 103.8 there is a walk suspension bridge that services one house on the other side of the river. There is no way to get fire equipment, other than on foot, across the river at this point.

The Narrows are from MM 105-102. The south aspect has heavy enough vegetation to support a significant fire and was only partially burned during the High Park Fire. The north aspect is mostly steep rock walls. There are a few areas at MM 101, 99, and 98 that are popular but illegal campsites. These are of great concern for unapproved campfires.

Community Access

The main access through the Poudre Park Community is via Highway 14, which runs east/west through the full length of the community. Highway 14 is a state highway maintained by the Colorado Department of Transportation (CDOT). Highway 14 is accessed from Jackson County to the west, the intersection of US Highway 287 to the east, and can also be accessed from Pingree Park Road (MM 96) or Stove Prairie Road (MM 106) west of Poudre Park.

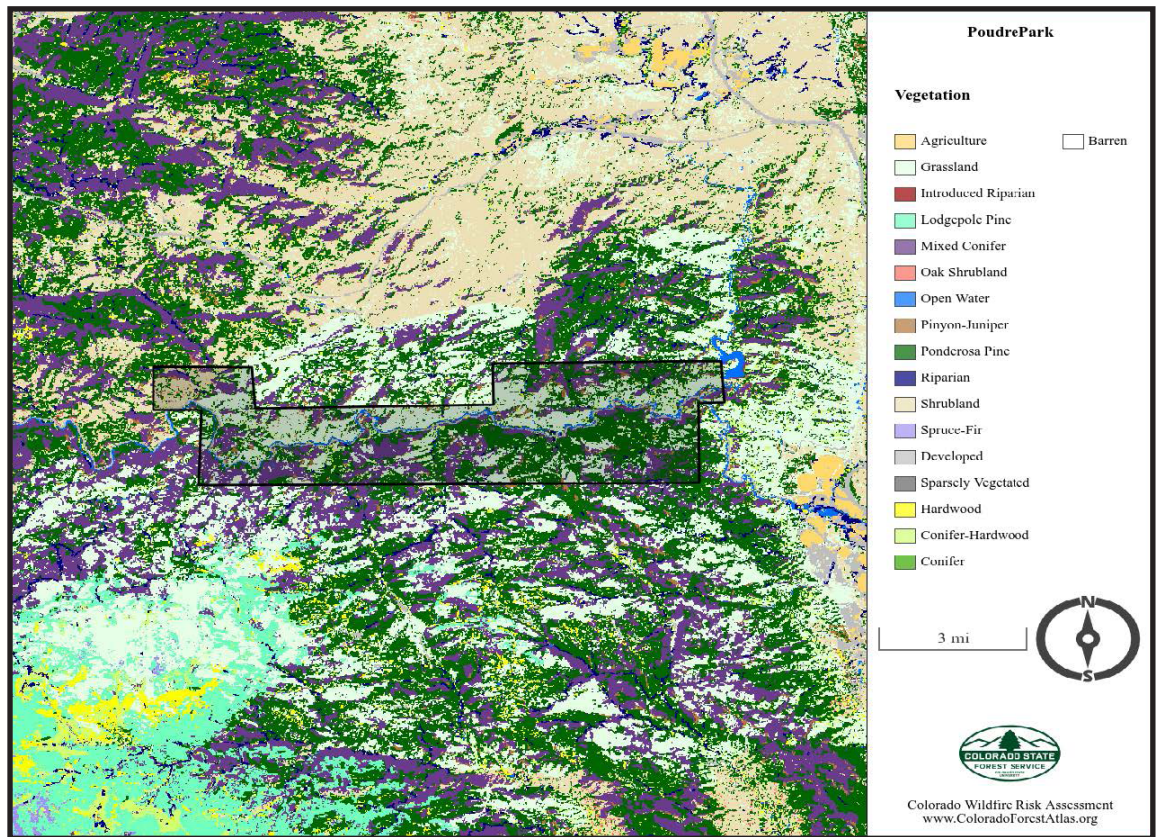


Figure 2.a.3. Map of vegetation across Poudre Park. Most of the land is ponderosa pine woodland, interspersed with mixed conifer stands and montane grasslands. (Source: Colorado State Forest Service, Colorado Forest Atlas).

Vegetation Type

The elevation in the Poudre Park area ranges between 5,400 and 7,000 feet. This elevation is known as the Lower Montane and consists mostly of ponderosa pine. Interspersed amongst the pine are fire-flashy Rocky Mountain Juniper trees. Other trees in the area consist of Blue Spruce, Engelmann Spruce, and aspen. The river's edge is predominately populated with cottonwood and willow. At this elevation there is still a fair amount of highly combustible sagebrush, chokecherry, and currant bushes. Vegetation varies between the north and south facing slopes. The south aspect is predominantly sagebrush and grasses. The north aspect consists of a much denser tree population,